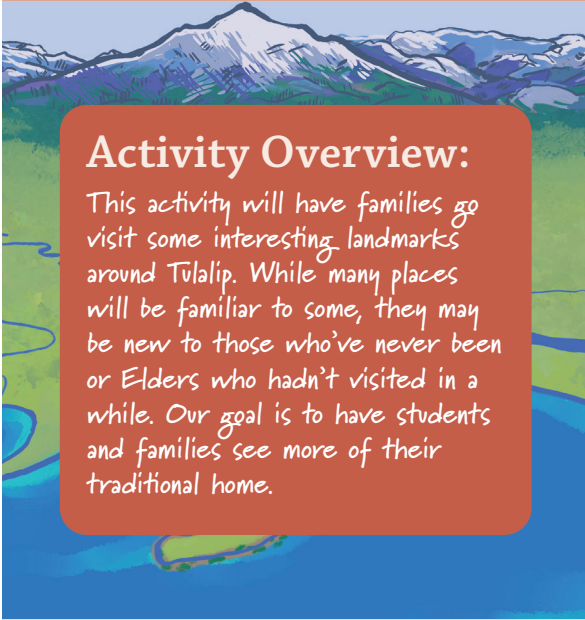


Tulalip Lushootseed Family Activity

Places of Interest



Activity Overview:

This activity will have families go visit some interesting landmarks around Tulalip. While many places will be familiar to some, they may be new to those who've never been or Elders who hadn't visited in a while. Our goal is to have students and families see more of their traditional home.

All About Tulalip Unit

In this unit children become familiar with the lands and waters of Tulalip and build their identity within the Tulalip Tribes. It establishes the relationship between people, culture, and rights that were secured by the treaty.

Lushootseed

stab čəx^w ʔəsšudx^w
What do you see?

ʔəsšudx^w čəd ti _____
I see _____

dəx^wʔətəd - *Dining Hall*

dx^wdig^witəg^wələlʔtx^w - *Admin*

q^wəl'sidəʔ dʒətix^w
Quil Ceda Creek

luł'ətəd - *Elders*

dx^wlilap - *Tulalip*

sduhubš - *Snohomish*

swatix^wtəd - *Land*

š^wəlč - *Ocean*

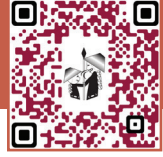
tliti - *Treaty*

stulək^w - *River*

dʒətix^w - *Creek*

sbadil - *Mountain*

Activity Instructions



- This activity will require the ʔiišəd (family) to travel to ləliʔ (different) locations like dəx^wʔəʔəd (Dining Hall/Old Montessori), dx^wdig^witəg^wəlalʔtx^w (Admin), and q^wəl'sidəʔ d^zəʔix^w (Quil Ceda Creek).
- These locations are very important places, modern and traditional.
- Visit these places and look and walk around the area, many have signs about the history around them.
- Have Elders and other family members share stories about other experiences they remember at these places.

