



## Lesson 11 (Places to go)

řaču?/ stulək <sup>w</sup>	Lake/ river
ʔalʔal	Home
sbadil/ sbadbadil	Mountain(s)
ř <sup>w</sup> əlč	Beach
sʔəʔədalʔtx <sup>w</sup>	Store/ restaurant
č <sup>2</sup> əʔabalʔtx <sup>w</sup>	Movie theatre
taŵd	Town
dəx <sup>w</sup> tilib g <sup>w</sup> əʔ ʔaciʔtalbix <sup>w</sup>	Coastal Jam
sʔuk <sup>w</sup> uk <sup>w</sup>	Game
řalalʔtx <sup>w</sup>	School

lədx <sup>w</sup> čadəx <sup>w</sup> čəx <sup>w</sup>	Where are you going?
ř'a čəd _____	I'm going to _____.
ʔuʔuř <sup>w</sup> čəd dx <sup>w</sup> ʔal ti _____	I'm going to _____.

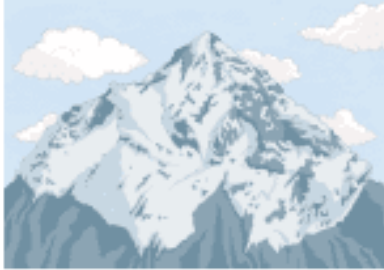
ř'a čəx <sup>w</sup> ʔu _____	Are you going to _____?
ʔuʔuř <sup>w</sup> čəx <sup>w</sup> ʔu dx <sup>w</sup> ʔal ti _____	Are you going to _____?
x <sup>w</sup> i? k <sup>w</sup> i g <sup>w</sup> ədsř'a _____	I'm not going to _____.



ǎačuʔ



ʔalʔal



sbadil



ǎwəlc



sʔəʔədalʔtx<sup>w</sup>



čəʔabalʔtx<sup>w</sup>



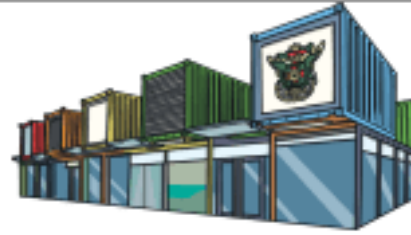
taləhalʔtx<sup>w</sup>



ta<sup>w</sup>d



ǎ́alalʔtx<sup>w</sup>



tag<sup>w</sup>sicaʔalʔtx<sup>w</sup>



dəx<sup>w</sup>t'ilib g<sup>w</sup>əʔ ʔaciʔtalbix<sup>w</sup>



sʔuk<sup>w</sup>uk<sup>w</sup>

Help:

እ'ላ ሕል - I'm going

እ'ላ ሕልግ ግህ - Are you are going...?

ለልጅግህልልጅግ ሕልግ- Where are you going?

Instructions: Answer by telling where you are going. Answer according to what is shown in the picture. Follow the model.



Model:

እ'ላ ሕልግ ግህ

እ'ላ ሕል ገልገል



እ'ላ ሕልግ ግህ



እ'ላ ሕልግ ግህ

1. \_\_\_\_\_

2. \_\_\_\_\_



እ'ላ ሕልግ ግህ

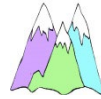
እ'ላ ሕልግ ግህ

3. \_\_\_\_\_

4. \_\_\_\_\_



እ'ላ ሕልግ ግህ



እ'ላ ሕልግ ግህ

5. \_\_\_\_\_

6. \_\_\_\_\_



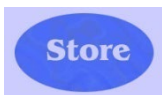
እ'ላ ሕልግ ግህ



እ'ላ ሕልግ ግህ

7. \_\_\_\_\_

8. \_\_\_\_\_



እ'ላ ሕልግ ግህ



እ'ላ ሕልግ ግህ

9. \_\_\_\_\_

10. \_\_\_\_\_