

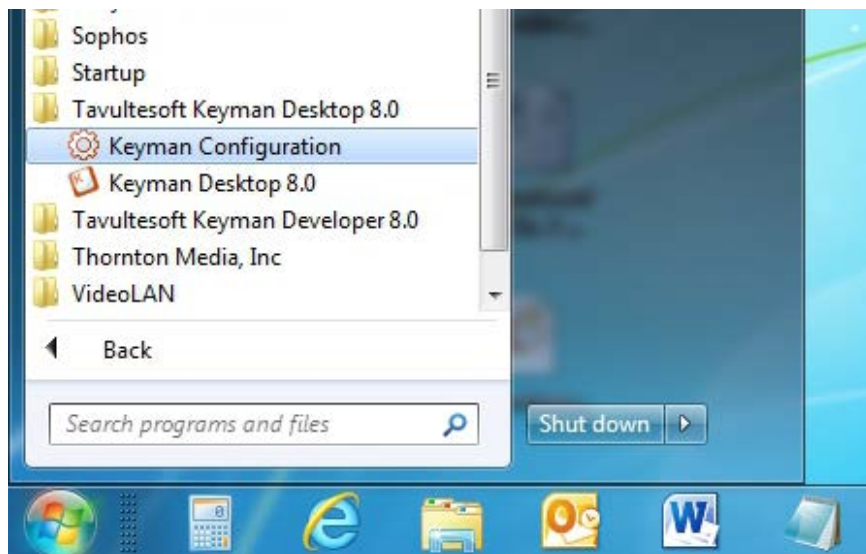
Setting up Tavultesoft Keyman Lushootseed Unicode Keyboard

This keyboard is for use with Unicode fonts, ie. LushootseedSchool or LushootseedSulad. After downloading and installing the Tavultesoft Keyman.com you will need to do a little more to make it easier to use.

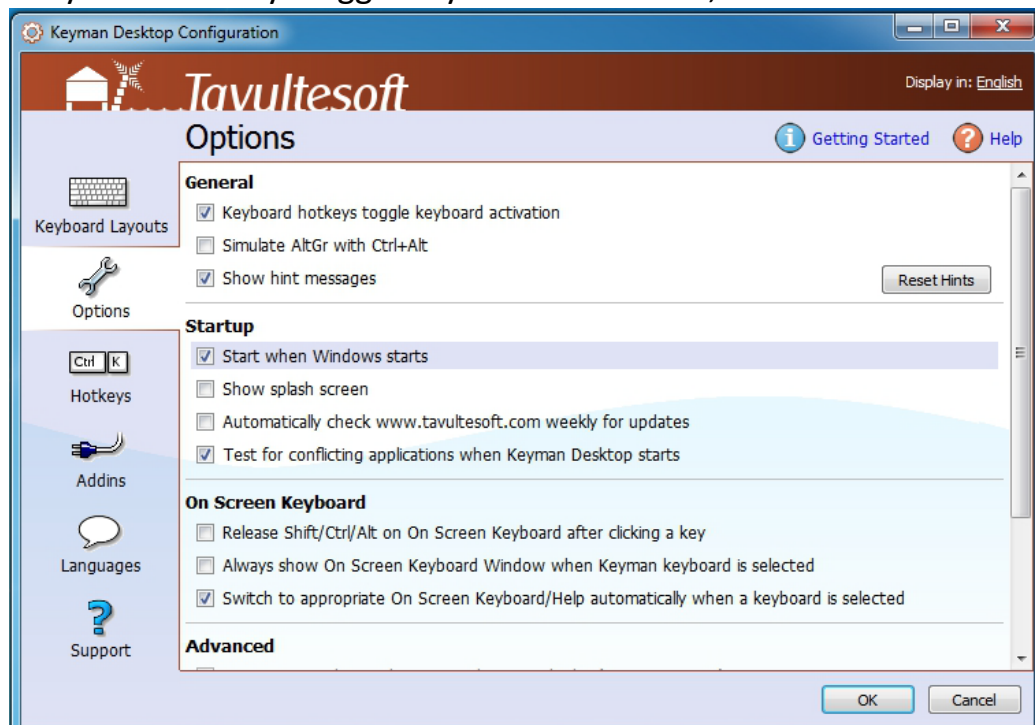
There are differences between Keyman Software and the Free Microsoft version. The Light Version of Keyman costs about \$24 and you can use two languages beside English. Keyman also allows you to backspace to delete an entire character not just one part of a character. Keyman also offers an onscreen keyboard.

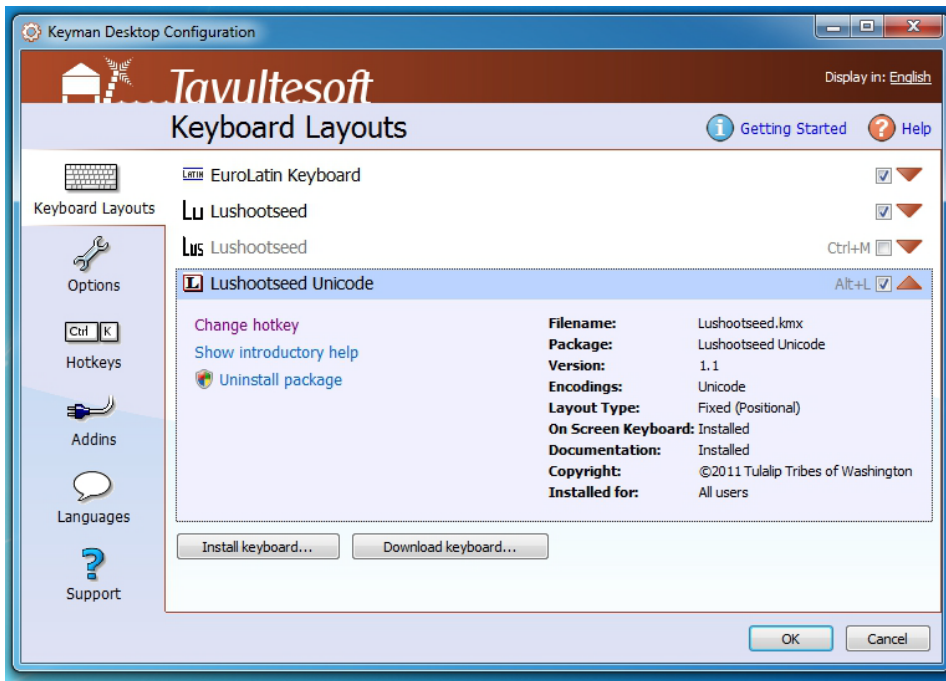
Keyman also offers an online International keyboard, **keymanweb.com**, just select your Language, however some characters don't show up, and that's a limit of the mobile device and carrier.

So, after following the install instructions for Keyman, open the program or click on the Start button, and scroll to Tavultesoft Keyman Desktop



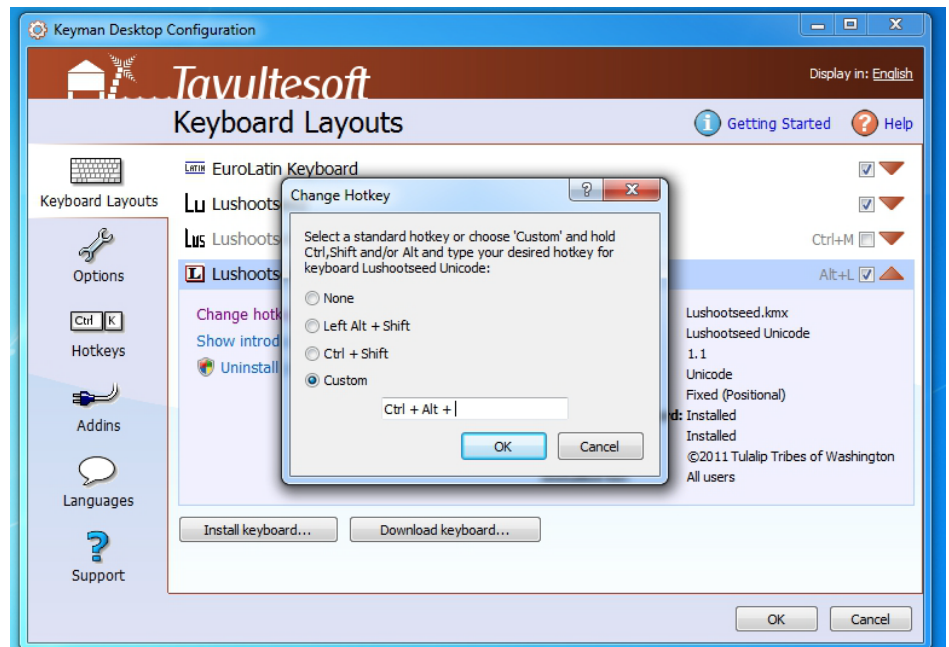
Now click on "Keyman Configuration." In the Options Startup category, check the box that says, "Start when Windows starts." Also make sure in the General category that the "Keyboard hotkeys toggle keyboard activation," is checked as shown.





If you downloaded the program with the key boards they should have been installed automatically. Highlight the Lushootseed Unicode Keyboard, and then click on “Change Hotkey.”

A new dialogue box will appear. Here set a HotKey combo you like. In the Lushootseed Department we have it set to the ALT+L keys. You can then click “OK” and “OK” to exit the Configuration mode. Now you can start “Keyman.”



Notice a Keyboard KEY for English



and a Large “L” for Lushootseed.

